

The BEHCON Blast



Vol.3
Issue 2

Enhancing the quality and economics of consumer-focused, physician-led primary healthcare.

Announcements

Welcome to the BEHCON Blast where you'll find useful information about the latest developments in the company.

Node II has officially initiated with the opening of the new office on June 2nd. This practice is located in a medical suite at 13206 N. 7th St., South East corner of Thunderbird and 7th St. in Phoenix. Please welcome the new team of Associates of Moon Valley:

Leslie Edison - Doctor
Eb Qureshi - PA
Michelle Aguilar - Office Manager
Anna Miller - Front Office
Allison Shonk - Referrals
Terrie Bean - Nurse
Erin Drake - Medical Assistant

As we continue to grow we welcome new faces in our East Valley location since our last BEHCON Blast such as:

Lupita Cruz - Call Center
Emilio Espinoza - Medical Assistant
Denise Encizo - Billing Department
Georgina Lerma - Billing Department
Victoria Gonzalez - Billing Department
Anna Estrada - Front Office
Diana Cardenas - Medical Assistant
Patricia Berumen - Call Center

In addition to the new faces, the BEHCON Bus has filled its seats with a new supervisory team composed of:
Nora Kelso - Back Office
Marta Hernandez - Billing
Linda Romo - Call Center
Ivan Ramos - Front Office

We would also like to wish those who have left BEHCON the best of luck in their new endeavors.

Other important changes that support our growth include the relocation of the Billing Department to the BEHCON Support Office in Phoenix as well as the Call Center moving to the former Billing Department at the South Family Practice.

Birthdays of the Month:

6th - Erica Soria

16th - Denisse Fontes



Interesting Facts



1. No piece of paper can be folded in half more than 7 times.
2. You burn more calories sleeping than you do watching television.
3. The king of hearts is the only king without a mustache.
4. American Airlines saved \$40,000 in 1987 by eliminating 1 olive from each salad served in first-class.
5. Apples, not caffeine, are more efficient at waking you up in the morning.

Let us HELP YOU!



In order to provide you with a better service we have implemented two new email accounts: it@behcon.com and hr@behcon.com. Please submit any IT or HR related issues, comments or suggestions to these emails and we will work on them as soon as possible.

OPERATIONAL GUIDELINES

Please remember to close out time in a box every time after clocking in or out. According to the Time in a Box tech support, leaving it open causes a whole multitude of problems.



Please verify the address on your payroll stub to confirm that it is accurate. If any changes are needed, please contact the HR department at HR@behcon.com. Also, if your emergency contact information has changed, please submit a new "New Hire Information" form, (available on the Behcon website) and send via email to HR@behcon.com



AMAZING JAKE'S-MESA, AZ



1830 East Baseline Road • Mesa, AZ 85204
PH: (480) 926-PIZZA (7499)

Don't miss out the next

BEHCON Summer Social Event

at Amazing Jakes!!!

Saturday July 19th

More information coming soon...

TOWN HALL

We had our quarterly Town Hall meetings the last week of June for Node 1 and Node 2. Important information was provided and plenty of new faces were introduced to the BEHCON Family.

Node II attended this reunion for the first time and great feedback was received from the associates from this facility.

The MA's team of East Valley took the opportunity to recognize the work and great support they have received from their Supervisor: Nora Kelso

Way to go Nora!!!



CONTENT SUBMISSION

Here are some guidelines for submitting content for The BEHCON Blast and BEHCON.com:

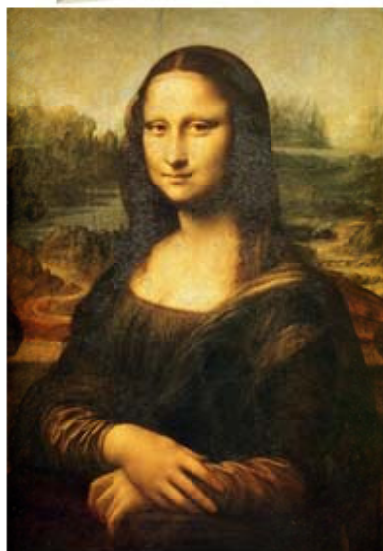
- Please submit to Denisse Fontes via email (dfontes@behcon.com), either in the body of the message or as a Word (.doc) attachment.
- Submissions for The BEHCON Blast can include, but are not limited to: births, birthdays, wanted ads, for sale ads, news you'd like mentioned, editorials, questions (remember- others may have the same ones), and of course, any and all feedback.
- Submissions for BEHCON.com should be limited to material that does not require frequent updates and will be used on an ongoing basis (such as administrative forms, important calendar dates, etc.)
- The BEHCON Blast will be published the first Tuesday of the month. Please submit content by 12 noon the previous Friday. Submissions for BEHCON.com will be posted as soon as possible following review. In most cases this will be no later than 2 business days.
- Your submission may be altered for editing purposes (formatting, spelling, etc.), and if deemed inappropriate will not be published. If this should occur you will be notified.

The Mona Lisa (1911)

Did you Know?

Perhaps the most famous case of art theft occurred on August 21, 1911, when the Mona Lisa was stolen from the Louvre. French poet Guillaume Apollinaire, who had once called for the Louvre to be "burnt down," came under suspicion; he was arrested and put in jail. Apollinaire pointed to his friend Pablo Picasso, who was also brought in for questioning, but both were later exonerated.[3]

At the time, the painting was believed to be lost forever, and it would be two years before the real thief was discovered. It turned out that Louvre employee Vincenzo Peruggia stole it by simply walking out the door with it hidden under his coat. Peruggia was an Italian patriot who believed da Vinci's painting should be returned to Italy for display in an Italian museum. Peruggia may have also been motivated by a friend who sold copies of the painting, which would skyrocket in value after the theft of the original. After having kept the painting in his apartment for two years, Peruggia grew impatient and was finally caught when he attempted to sell it to the directors of the Uffizi Gallery in Florence; it was exhibited all over Italy and returned to the Louvre in 1913. Peruggia was hailed for his patriotism in Italy and only served a few months in jail for the crime



Publisher: Denisse Fontes